

Optical Borehole TV Tester

Introduction:

- ❖ A HD digital camera probe is used for the WTS-DCT(D) Borehole TV Tester to observe the inside of the core hole or the inner wall of the prestressed pipe pile in real time. It is also used to record and extend the image within the effective image range of the probe, and save the images of the probe in video mode.



Application:

- Verify the core of the pile foundation; observe the position and extent of various defects in the concrete, such as voids, cracks and segregation.
- Observe various anomalies and defects of the prestressed pipe piles; check the status of joints; quantitatively analyze the quality of the pile body, such as fracture area and location, length, width and direction of the fracture and crack. □
- Observe various features and subtle structures of boreholes' geological body, such as stratigraphic lithology, rock structures, faults, fissures, interlayers and karst and catalogue geological histograms.

WTS GEOPHYSICAL SOLUTIONS

Head Quarters

📍 RM 1902 ,Easey Comm Bldg
253-261 Hennessy Rd,Wanchai
Hongkong

☎ (0086) 18071521517
(0086) 13189733144

✉ info@wtsgeophysical.com

Business Centre

📍 25, Rayala Towers, Tower II,
I Floor, Anna Salai,
Chennai, India

☎ (0091) 9843474810

✉ wtsgeo@wtsgeophysical.com



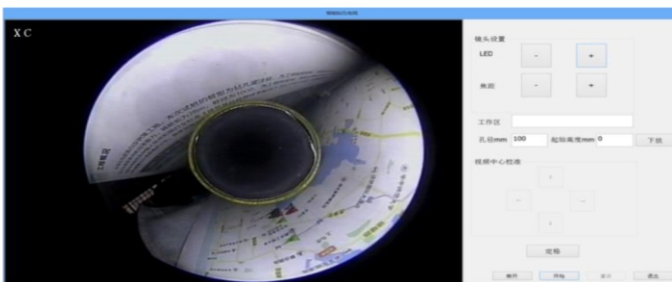
- Observe the contents of underground pipelines; quantitatively analyze the quality of pipeline, such as fracture area and location, length, width and direction of the fracture and crack.

Compliant Specifications:

Technical Regulations for Camera Detection in Pile Foundations (CECS 253:2009)

Technical Features:

1. On-site collection shall be done while preserving. Image mosaicking is completed after the collection is completed;
2. The mode of "see as you get" is adopted for image and result display, and the display is completely consistent with the print result;
3. It can display the plane expansion diagram and the stereoscopic histogram. The stereoscopic histogram can rotate 360 degrees continuously.
4. The shell of the probe is made of stainless steel and the cover is made of toughened optical glass;
5. Dual camera mode, variable side focal length, real-time and clear observation of hole wall signal output picture and video;
6. Digital HD camera is adopted, and the imaging resolution can reach 1080p;
7. The host is controlled wirelessly, and the wireless control distance can be up to 30m;
8. Equipped with detachable battery, effectively ensuring on-site test time.



WTS GEOPHYSICAL SOLUTIONS

Head Quarters

📍 RM 1902 ,Easey Comm Bldg
253-261 Hennessy Rd, Wanchai
Hongkong

☎ (0086) 18071521517
(0086) 13189733144

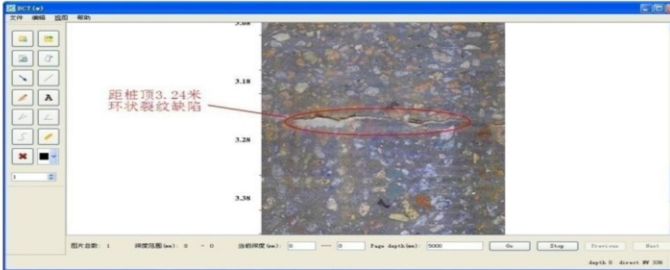
✉ info@wtsgeophysical.com

Business Centre

📍 25, Rayala Towers, Tower II,
I Floor, Anna Salai,
Chennai, India

☎ (0091) 9843474810

✉ wtsgeo@wtsgeophysical.com



Performance indicators:

WTS-DCT(D) Borehole TV Tester			
Master mode	Tablet wireless control	Power supply	lithium battery
Control system	Windows 7 and above	Battery life	≥10 hours
Camera pixel	200W	Host size	250X180X70 mm
Image Resolution	1920*1080	Host weight	1.8kg
Video frame rate	25 frames per second	Probe outer diameter	60mm、98mm
Operating Voltage	7.4V±10%	Probe pressure	3MPa
Adaptive aperture	Φ60mm to Φ400mm	Maximum lifting speed	10m/min
Azimuth correction	Yes	Maximum test hole depth	300m

Standard configuration:

Serial number	Name	Number
1	Optical Borehole TV Tester host	One
2	Type 60 probe	One
3	Communication cable	One
4	Tripod	One

WTS GEOPHYSICAL SOLUTIONS

Head Quarters

📍 RM 1902 ,Easey Comm Bldg
253-261 Hennessy Rd,Wanchai
Hongkong

☎ (0086) 18071521517
(0086) 13189733144

✉ info@wtsgeophysical.com

Business Centre

📍 25, Rayala Towers, Tower II,
I Floor, Anna Salai,
Chennai, India

☎ (0091) 9843474810

✉ wtsgeo@wtsgeophysical.com



5	Increase counters and connections	One
6	100 m manual winch	One
7	Fixed wrench	One
8	High-grade instrument box	One

Full Set of 98-type Optical Borehole TV Tester



WTS GEOPHYSICAL SOLUTIONS

Head Quarters

📍 RM 1902 ,Easey Comm Bldg
253-261 Hennessy Rd,Wanchai
Hongkong

☎ (0086) 18071521517
(0086) 13189733144

✉ info@wtsgeophysical.com

Business Centre

📍 25, Rayala Towers, Tower II,
I Floor, Anna Salai,
Chennai, India

☎ (0091) 9843474810

✉ wtsgeo@wtsgeophysical.com



Full Set of 60-type Borehole TV Tester



WTS GEOPHYSICAL SOLUTIONS

Head Quarters

📍 RM 1902 ,Easey Comm Bldg
253-261 Hennessy Rd,Wanchai
Hongkong

☎ (0086) 18071521517
(0086) 13189733144

✉ info@wtsgeophysical.com

Business Centre

📍 25, Rayala Towers, Tower II,
I Floor, Anna Salai,
Chennai, India

☎ (0091) 9843474810

✉ wtsgeo@wtsgeophysical.com

